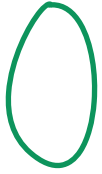


ADDING CHRISTMAS LIGHTS TO RUDOLPH

STEP ONE - PICK YOUR STYLE OF LIGHTS

VINTAGE LIGHTS



Draw a rough oval shape



Draw a small sausage shape to one side



Colour inside the oval leaving the sausage shape white



Draw a small black square at the top.

Try these with felt tip pens or coloured pencils

ROUND BULB LIGHTS



Draw a rough circle shape



Draw a small banana shape to one side



Colour inside the circle leaving the banana shape white



Draw a small black square at the top.

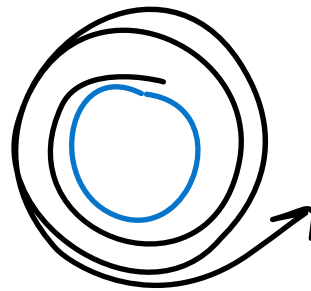
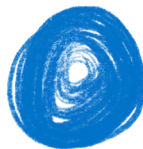
GLOWING LIGHTS



Draw a rough circle shape



Colour round & round inside the circle using less pressure as you get to the middle



Colour round & round outside the circle really gently. Start from the outside of the original circle and go outwards using less pressure as you go further away

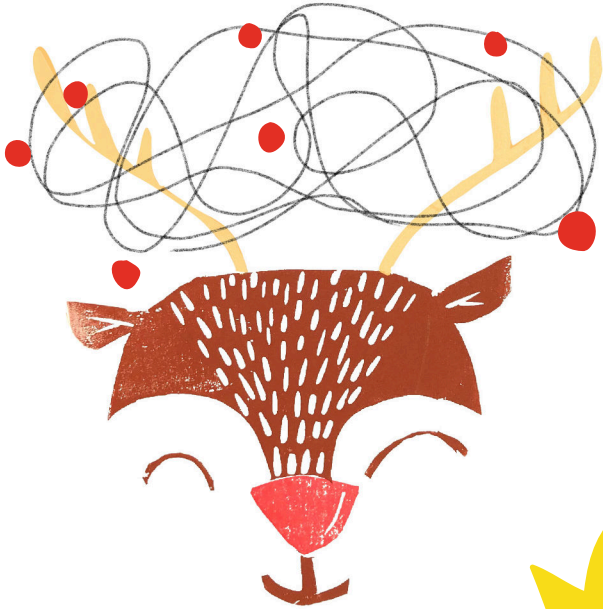
SMALL CIRCLES & DOTS ALSO WORK REALLY WELL!

This style works best with coloured pencils

ADDING CHRISTMAS LIGHTS TO RUDOLPH

STEP TWO - ADD LIGHTS TO RUDOLPH

Pick your first colour and add an odd number of lights around the string.

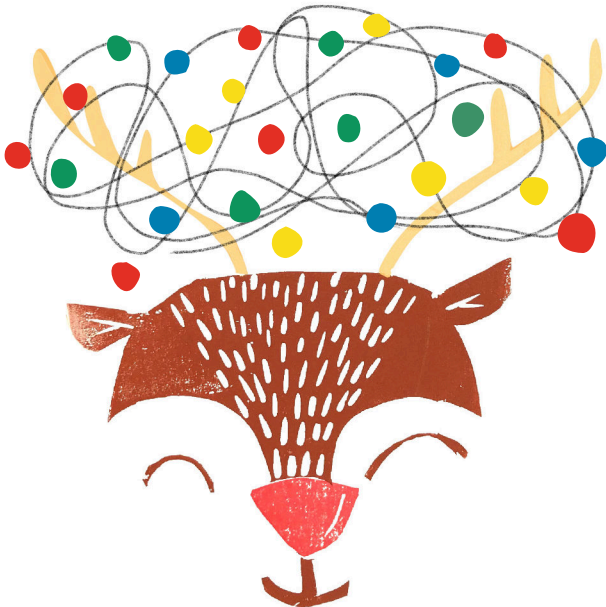


Have fun - there is no right or wrong way!

Add in the second colour - remember you can always go back and add more but you can't take them away!

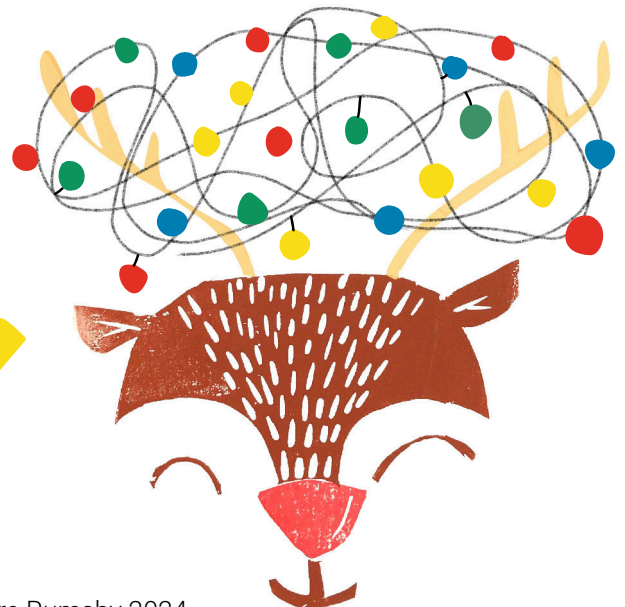


Keep adding lights until you're happy



Lights can be upside down as well as right way up

Connect the lights to the string if you want to by drawing either small black squares or lines



Don't forget to put your name on the back

HANDMADE WITH LOVE BY

& CLAIRE RUMSBY
www.clairerumsby.com